






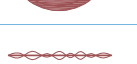

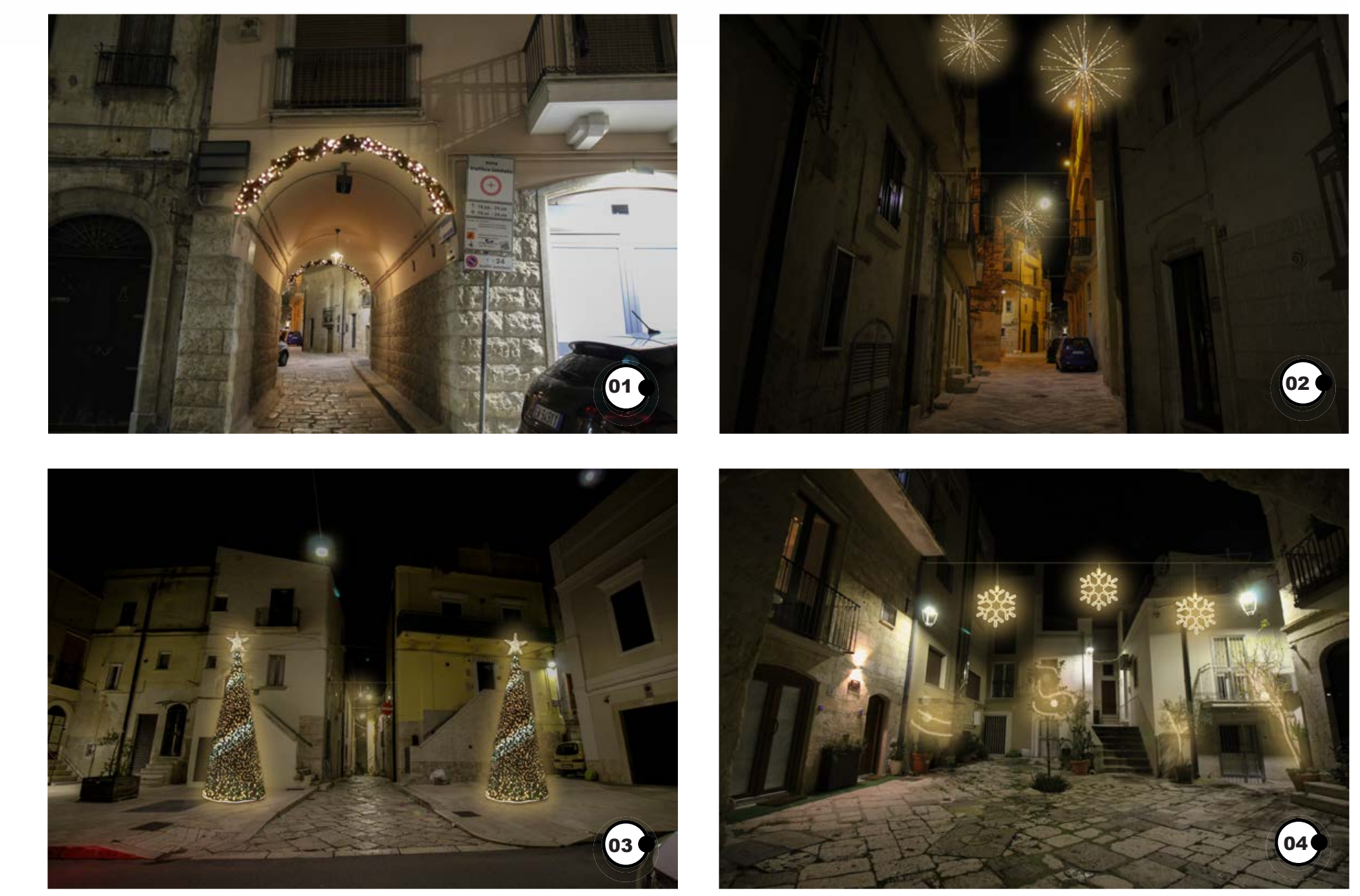
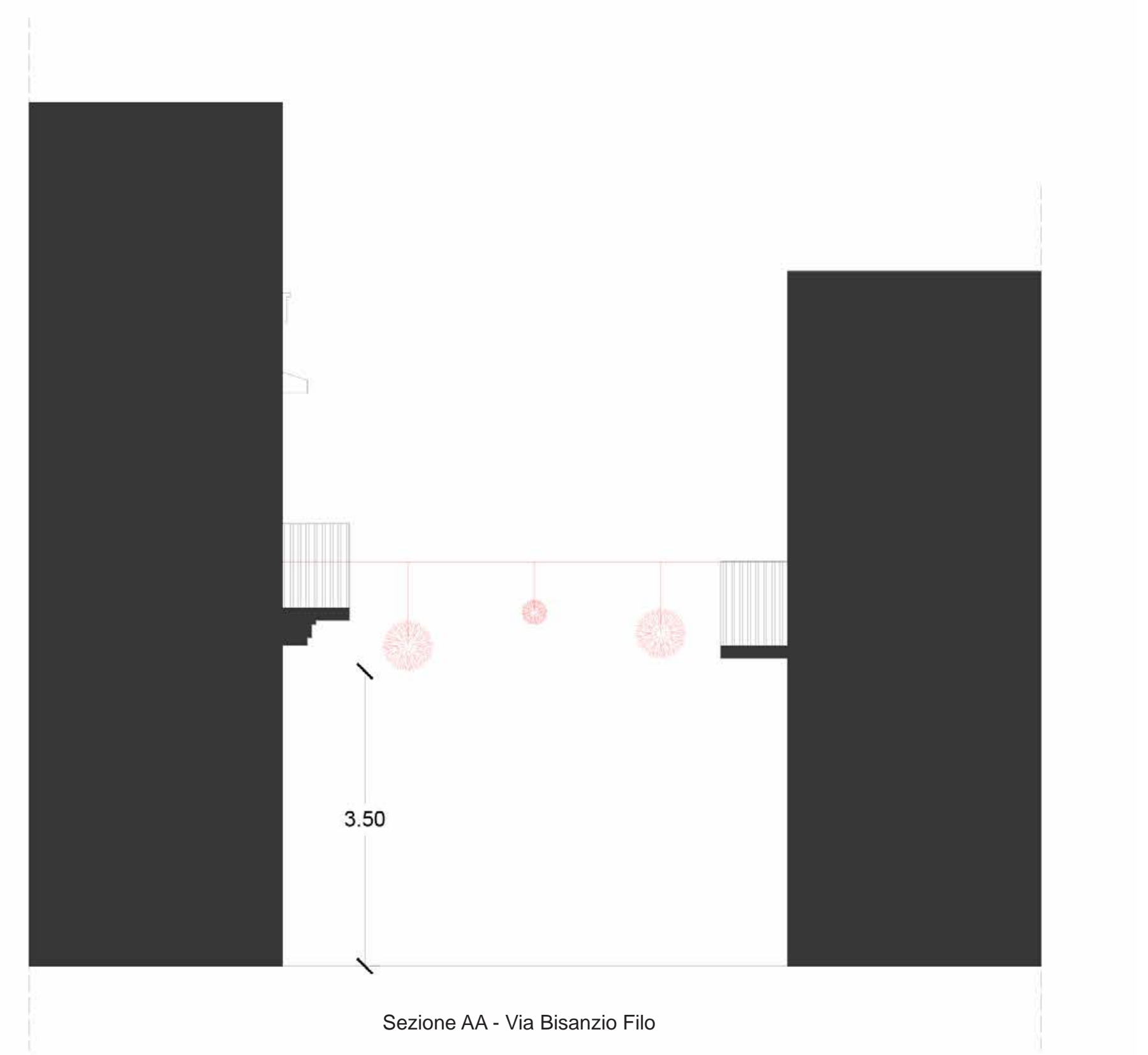


- LEGENDA**
-  MEDAGLIONE FIOCCO CM 60
 -  MEDAGLIONE CAMPANA CM 60
 -  STELLA CM 30X30
 -  STELLA CM 60X60
 -  FIOCCO CM 60
 -  TIRANTE
 -  ALBERO LUMINOSO
 -  GHIRLANDA
 -  SFERA



CITTA' DI ALTAMURA
 Città Metropolitana di Bari
 Settore Servizio Cultura e Turismo

PROGETTO ESECUTIVO
 PROGETTAZIONE LUMINARIE ED ALLESTIMENTI NATALIZI

titolo
 Stato di progetto - Area 1

progetto esecutivo
 arch. Pasquale Iacovone

dirigente IV SETTORE
 dott. Bernardino Galeone

RUP
 dott. Arrigo Melodia

data	scala	note	disegno n°
ottobre 2023	1/200		TAV. 2